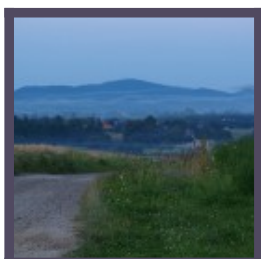


Czarnorzeki-Strzyżów Landscape Park

The park includes the parts of the Pogórze Strzyżowskie and Pogórze Dynowskie with the most beautiful landscapes and of greatest natural

Telefon:



Sucha Mountain

Sucha Mountain is the highest peak of Pogórze Dynowskie, with a radio and TV mast on the top. The building of the mast began in 1960 and TV programmes

Telefon:

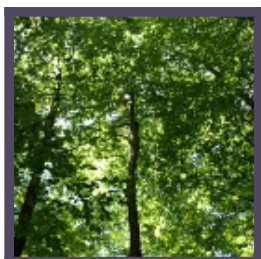


ul.
Pelczara
158,
38-420
Korczyna

Prządki Nature Reserve

The Prządki reserve is situated in the Czarnorzeki-Strzyżów Landscape Park, on the border of Czarnorzeki and Korczyna, by the road leading from

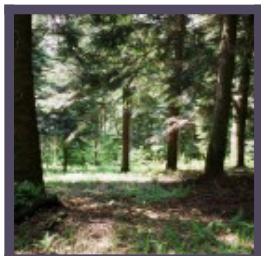
Telefon:



Królewska Mountain

Królewska Mountain (554 metres above sea level) is situated in Pogórze Dynowskie and covered with beech forest. On its slopes, there

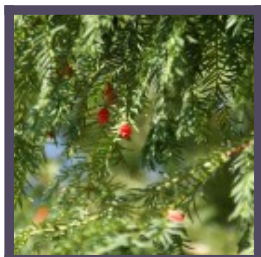
Telefon:



Kretówki Nature Reserve

The Kretówki reserve is situated on the border of Jabłonica Polska, Malinówka and Orzechówka, and was established in 1959. Like

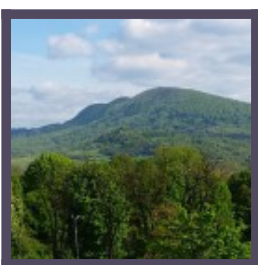
Telefon:



Cisy Nature Reserve in Malinówka

A 20-minute drive from the centre of the town of Malinówka and a several-minute walk from the school in Malinówka is all you need to see

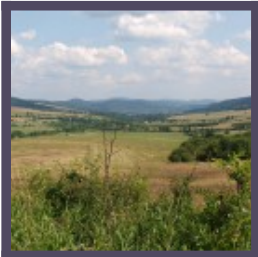
Telefon:



Cergowa

Cergowa, rising majestically over Dukla and the neighbouring villages, is the highest and the most beautiful mountain in the Beskid Dukielski. It

Telefon:



Beskid Niski

Beskid Niski this mountain range is considered by many to be the wildest in Poland. To the east, it borders Bieszczady Mountains, and stretches up to the

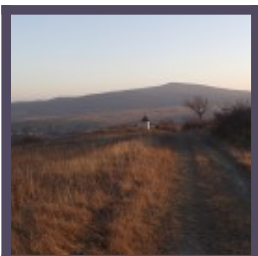
Telefon:



Jaśliska Landscape Park

The Jaśliska Landscape Park was established in 1992 to provide protection for the source areas of the Jasiołka and Wisłok rivers. It is situated between

Telefon:



Kamień

Kamień, at 859 metres above sea level, is the tallest mountain in the eastern and central part of the Beskid Niski. It has two peaks and is flat on the

Telefon:



Kamień nad Jaśliskami Nature Reserve

The reserve was created in 2000 to protect the lay of the land typical for the Beskid Niski, and covers the area of over 300 ha. The protected area comprises

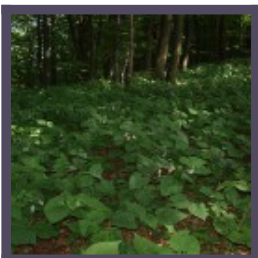
Telefon:



Piotruś

Piotruś (727 metres above sea level) is a mountain in the eastern part of the Beskid Dukielski. Its name stems from the Romanian word pietros meaning

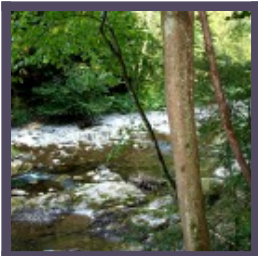
Telefon:



Millennium Reserve on Cergowa Mountain

The reserve is situated on the northern slopes of Cergowa Mountain, in the villages of Cergowa and Jasionka. It was established in 1963 and covers

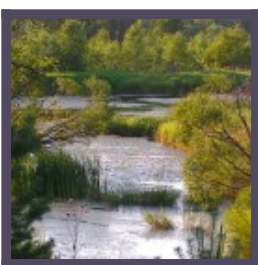
Telefon:



Przełom Jasiołki Nature Reserve

The reserve was established in 1976 to protect the natural tree stands on the area of over 120 ha, covering the Jasiołka River valley between Ostra Mountain

Telefon:



Źródlika Jasiołki Nature Reserve

The reserve was established in 1993 to protect the natural plant communities of the spring areas of the rivers Wisłok and Jasiołka. It is the biggest

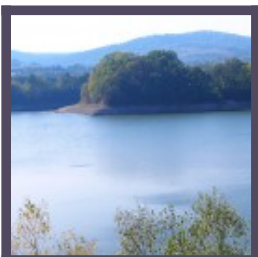
Telefon:



The Magura National Park

The Magura National Park is situated at the heart of the Beskid Niski and covers the source area of the Wisłoka river and the Magura Wątkowska range.

Telefon:



Sieniawa Lake

Sieniawa Lake was created in 1978, when a dam was built on the Wisłok river in Sieniawa, on the 172.8th kilometre of its length.

The dam is 174 metres

Telefon:



The valley of the Wisłok river

Near Besko, the Wisłok river flows through a narrow, deep gorge, whose precipitous walls are up to 60 metres tall. It is one of the most beautiful river

Telefon:



Beskid
Niski,
Polska

The Papal Trail

The Papal Trail the trail has been traced out by the Local Tourist Organization called "Beskid Niski" (Low Beskid Mountains) in the Town

Telefon:



Świętego
Wojciecha
4, Krosno,
Polska

The Wooden Architecture Trail

This trail runs through three provinces: Malopolska (Little Poland) Province, Podkarpackie (Subcarpathian) Province and Śląskie (Silesian) Province.

Telefon: